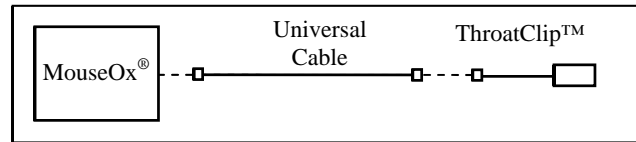


Mouse/Rat Pup ThroatClip™ Instruction Sheet – Sizes XS and S

The Mouse/Rat Pup ThroatClip™ must be used on ANESTHETIZED animals ONLY!!



Mouse/Rat Pup ThroatClip™ Sizing

Mouse Weight Range (gm)		Clip Size	Rat Pup Weight Range (gm)
Unshaven	Shaven		
1 – 15	1 - 20	XS	N/A
>15	>20	S	5 - 30

Note that the Clip Size is engraved on the back of the clip handles.

CollarClip™/ThroatClip™ Differentiation

The CollarClip™ is colored blue, while the ThroatClip™ is colored black.

It is important that you use the correct clip in the correct application.

Attaching the ThroatClip™ and Making Measurements

- 1] Anesthetize the animal, then connect the MouseOx®, Universal Cable and ThroatClip™ Sensor.
- 2] If you are using an animal with non-white fur, you MUST either shave the entire sensor site WELL, or use a depilatory product such as Nair® (See Chemical Hair Removal below).
- 3] With the animal laying in the supine position, push/slide the skin down on either side of the throat, then place the clip over the throat while holding the skin down so that the tines end up BEHIND the ears and in FRONT of the paws. The clip handles should be centered on the throat of the animal. Be careful that the tips of the tines do not catch on the lab surface such that the clip does not close completely.



- 4] Check that the wiring assembly is connected to the MouseOx®, then start the software. You MUST USE Revision 6.3 or higher with the ThroatClip™. Follow the menu of buttons, choosing those appropriate to your measurement conditions.
- 5] If signals do not come in quickly, or performance degrades over time, try the following:
 - Re-position the sensor
 - Replace the sensor
 - Shave the animal

When to Replace Sensor Clips

The clips are designed to be disposable. You should replace them in the following situations:

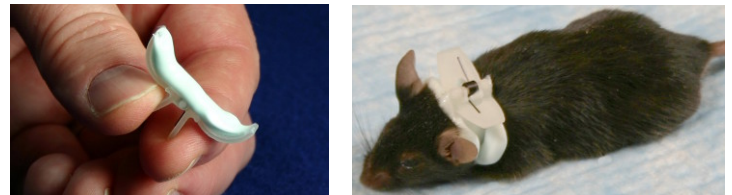
- 1] significant buildup of hair or material covering the clip faces,
- 2] good signals (data values on the software screen are in color) take an inordinately long time to appear,
- 3] presence of any mechanical defect in the sensor.

Chemical Hair Removal

The Blank Clips that come with each Clip Pack can also be used to chemically remove hair from the ThroatClip™ sensor site on the animal. We strongly urge using this method over shaving, and we also suggest that you do this a few hours to a day before you will be conducting tests on your animals.

NOTE: You MUST remove hair from the sensor site of non-white animals.

- 1] Lay a bead of depilatory cream (e.g., Nair®) around the entire inside of the Blank Clip as shown.



- 2] Place the clip on the animal at the location that will be used during testing, and let the clip and depilatory cream remain in place for the duration specified by the manufacturer.
- 3] Remove the clip, then carefully wash the cream completely off of the animal using swabs and a small water dish. The hair will be removed with the cream when you do this.