

Animal Restrainer for Small Rodents (Mouse & Rat)



Designed To Provide Complete Visual Awareness Of The State Of Your Animal.

Immobilization of experiment animals is required in many pharmacological and physiological experiments. To satisfy this need, we have launched different categories of optimized animal restrainers. All rodent restrainers are manufactured from clear perspex materials to provide complete visual awareness of the state of your animal.

MICE & RAT RESTRAINER



Broom Style (Tail Access Type):

Broom Restrainers provide fast and easy animal insertion. The cylindrical design of these restrainers solves the problem of the rodents turning once they are introduced into the Restrainer. One side of restrainer is fixed with transparent tail piece (perspex plate) having a slot for tail while the other side fitted with a Head piece (bush) having a smooth conical shape from inside for positioning the head of rodent. Head piece can be adjusted according to size of animal and tightened using the black colour knob.

FEATURES:

- Ease of use and access to the
- rodent Safety for the animal handler
- Thickness of 5mm

This restrainer is perfect for injections or blood sampling.

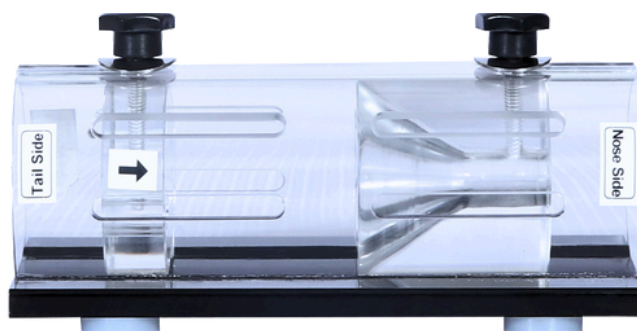
Model No.	Animal Weight Range	Restraining ID (mm)	Length Min x Max (mm)
VI-9131	15g to 30g	25	50x92
VI-9132	30 g to 70g	30	59x106
VI-9133	70 g to 125 g	40	60x129
VI-9134	125 g to 200 g	50	97x166
VI-9135	200 g to 250 g	65	125x185

Note: Restraining ID may vary by +/- 2mm & length(min*max) may vary by +/- 5mm

Flat Bottom Restrainer (Head and Tail Adjustable Type):

Flat bottom restrainers are manufactured from perspex cylinders mounted on a flat black perspex base. All the models have free access through both extremes, by opening the respective tilting door that is fixed by a screw at the upper part of the restrainer. Animals can be immobilised by sliding the doors along the restrainer. A slot in the base of the door allows for the whole tail to be available for the pulse transducer and cuff installation, the i.v. drug administration or the blood extraction.

The easy operation of the doors and its disposition on the extremes of the restrainer makes the manipulation of the animal convenient and avoids the animal to be dragged backwards, protecting it from injuries in the feet.



FEATURES:

- Both head and tail piece can be adjusted
- More exposure of animal area in comparison to any other kind of restrainer
- Screw and rod system provided for adjusting the head and nose piece is more fast and easier in comparison to single knob system as in case of broom type restrainer

Model No.	Animal Weight Range	Restraining ID (mm)	Length Min x Max (mm)
VI-9231	15g to 30g	30	42x87
VI-9232	30 g to 70g	40	50x97
VI-9233	70 g to 125 g	50	70x142
VI-9234	125 g to 250 g	65	103x160
VI-9235	250 g to 500 g	72	80x202

Note: Restraining ID may vary by +/- 2mm & length(min*max) may vary by +/- 5mm



Instruments that work !

**INSTRUMENTS AND CONSUMABLES FOR
RESEARCH ON NEUROSCIENCES,
PHARMACOLOGY AND PHYSIOLOGY IN
VIVO.**

+33 768 725 998

aniphy.com