

### **Animal Lancets general instructions on mice**

1. CHOOSE THE PROPER LANCET POINT LENGTH FROM THE CHART ABOVE, CORRESPONDING TO THE AGE OF YOUR MOUSE.

2. OPEN THE LANCET WRAPPER AND PREPARE A COLLECTION VIAL.

Be careful not to touch the sterile point.

3. HOLD THE ANIMAL SECURELY

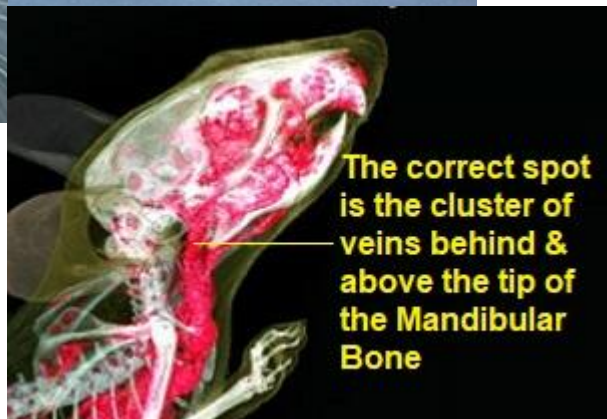
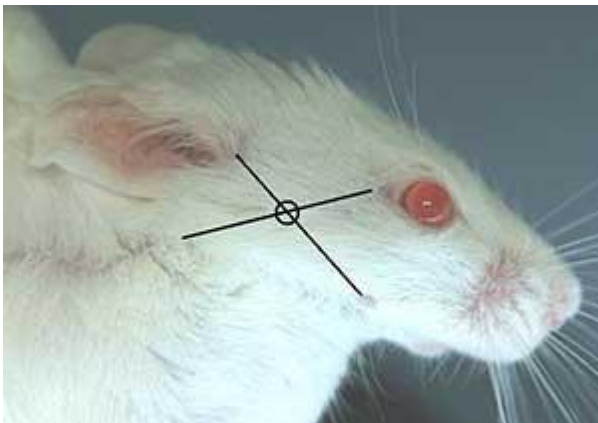
4. LOCATE THE BACK OF THE JAW BONE.

The puncture location is a vascular bundle located just above the rear of the jawbone, providing a convenient and consistent source of blood.



6. PRESS A CLEAN COMPRESS TO THE SITE FOR A FEW SECONDS TO STOP THE BLOOD FLOW

The mouse will self-groom and be unaffected.



5. PIERCE THE ANIMAL & QUICKLY WITHDRAW THE LANCET. COLLECT THE SAMPLE.

You can stop the blood flow at any time by applying a compress to the puncture site.

